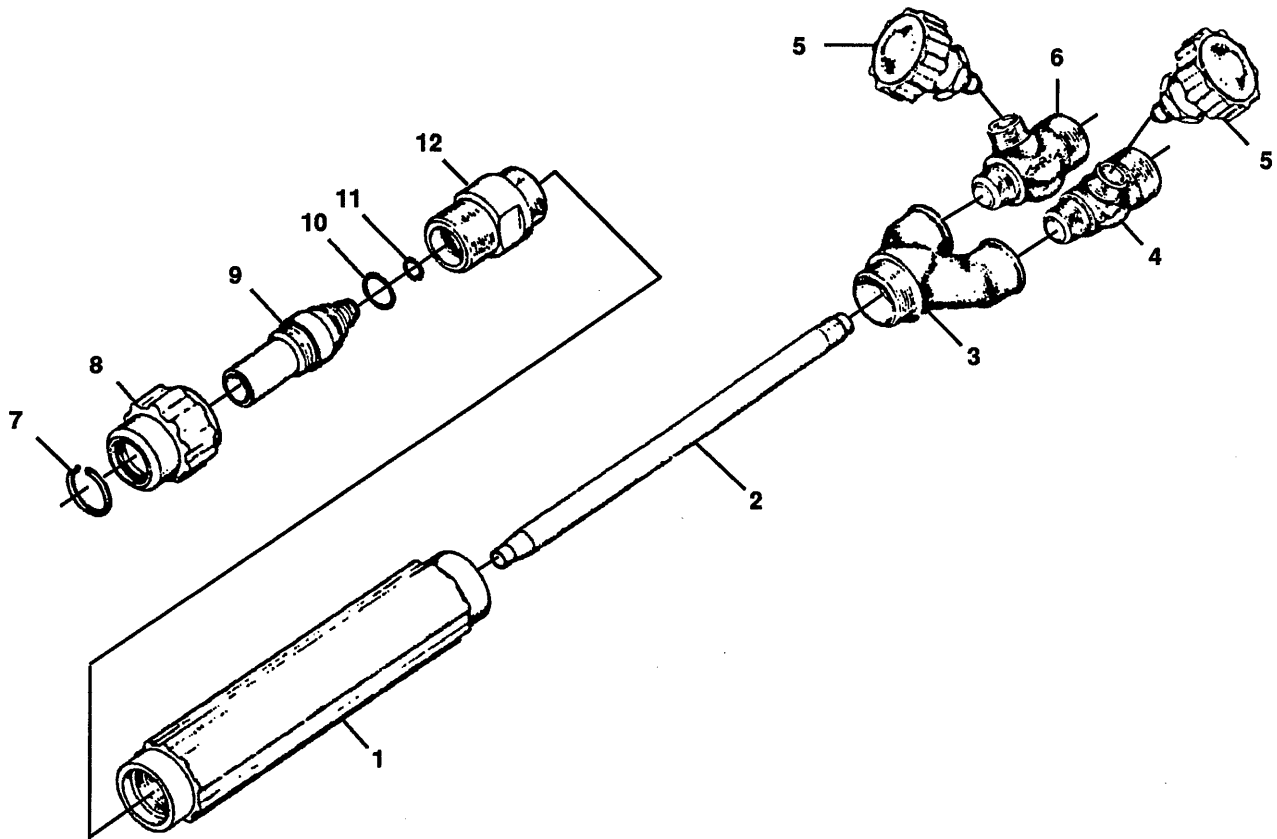


Western Enterprises

Models CB-730 & CB-530

Welding Handles

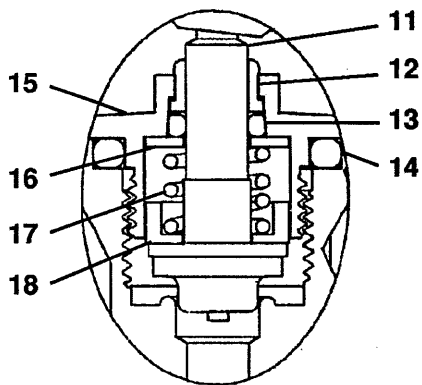
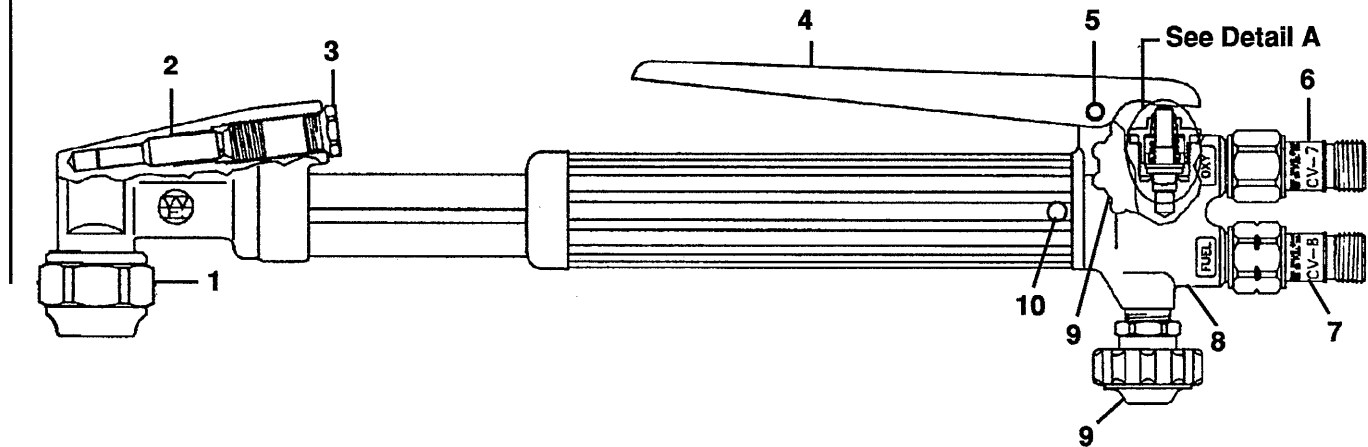


REF. NO.	MFG. NO.	S-S NO.	DESCRIPTION	CODE	REF. NO.	MFG. NO.	S-S NO.	DESCRIPTION	CODE
	CB-730		Welding Handle	A	7	CB-721		Retaining Ring	A
	CB-530		Welding Handle	B		CB-521		Retaining Ring	B
1	CB-724		Welding Torch Handle	A	8	CB-720		Union Nut	A
	CB-524		Welding Torch Handle	B		CB-520		Union Nut	B
2	CB-725		Inner Tube	A	9	CB-735		Brazing Nipple	A
	CB-525		Inner Tube	B		CB-507		Brazing Nipple	B
3	CB-701		Handle Tailpiece	A	10	CB-727		O-Ring	A
	CB-501		Handle Tailpiece	B		CB-527		O-Ring	B
4	CB-705-1		Fuel Gas Valve Body	A	11	CB-726		O-Ring	A
	CB-505-1		Fuel Gas Valve Body	B		CB-526		O-Ring	B
5	TS2-1		Valve Stem Sub-Assy. (2)	A	12	CB-706		Union Adaptor	A
	TS2-2		Valve Stem Sub-Assy. (2)	B		CB-506		Union Adaptor	B
6	CB-704-1		Oxygen Valve Body	A					
	CB-504-1		Oxygen Valve Body	B					

Western Enterprises

1600 Series

Cutting Torch



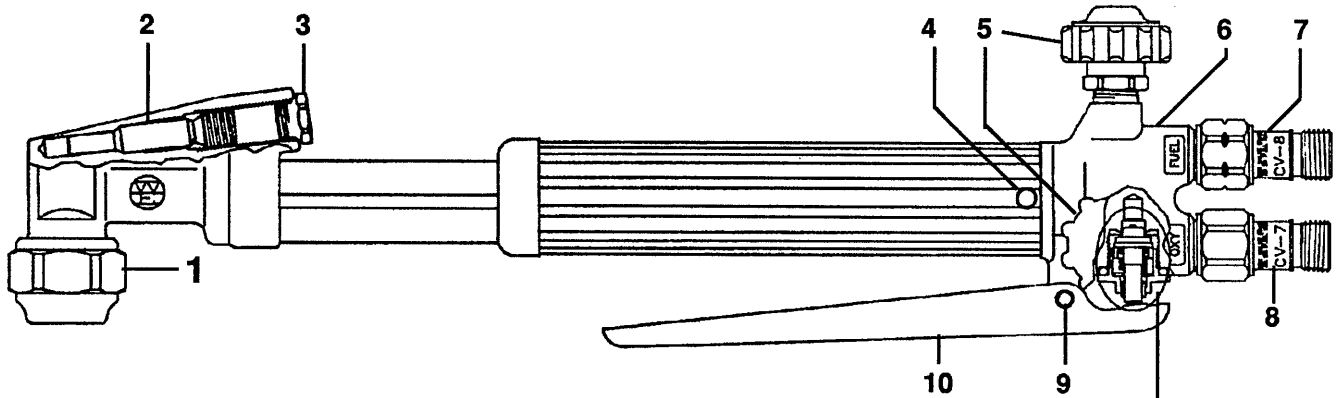
Detail A

REF. NO.	MFG. NO.	S-S NO.	DESCRIPTION	CODE	REF. NO.	MFG. NO.	S-S NO.	DESCRIPTION	CODE
	1600		Cutting Torch		12	CB-728		Guide Bushing	
1	TN2-1		Tip Nut		13	RO-008N		O-Ring	
2	CB-717		Mixer Acetylene		14	RO-113N		O-Ring	
	CB-741		Mixer Propane		15	CB-715		Cutting Valve Nut	
3	CB-718-1		Mixer Cap Acetylene		16	CB-714		Washer	
	CB-718-2		Mixer Cap Propane		17	CB-713		Spring	
4	CB-722		Cutting Lever		18	CB-716		Guide Cap	
5	CB-723		Spring Pin						
6	CV-7R	WE-465	Oxygen Check Valve						
7	CV-8L	WE-466	Fuel Gas Check Valve						
8	CB-130		Cutting Torch Assembly						
9	TS2-1		Valve Stem Sub-Assembly						
10	DS-4		Drive Screw						
11	CB-712		Cutting Valve Stem						

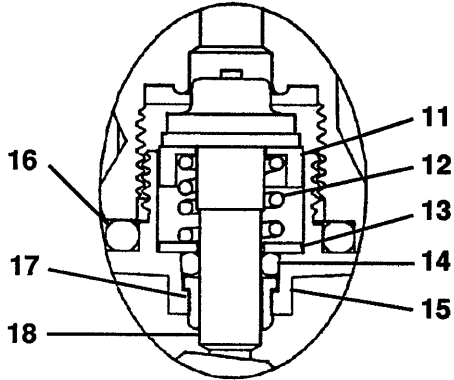
Western Enterprises

1700 Series

Cutting Torch



See Detail A



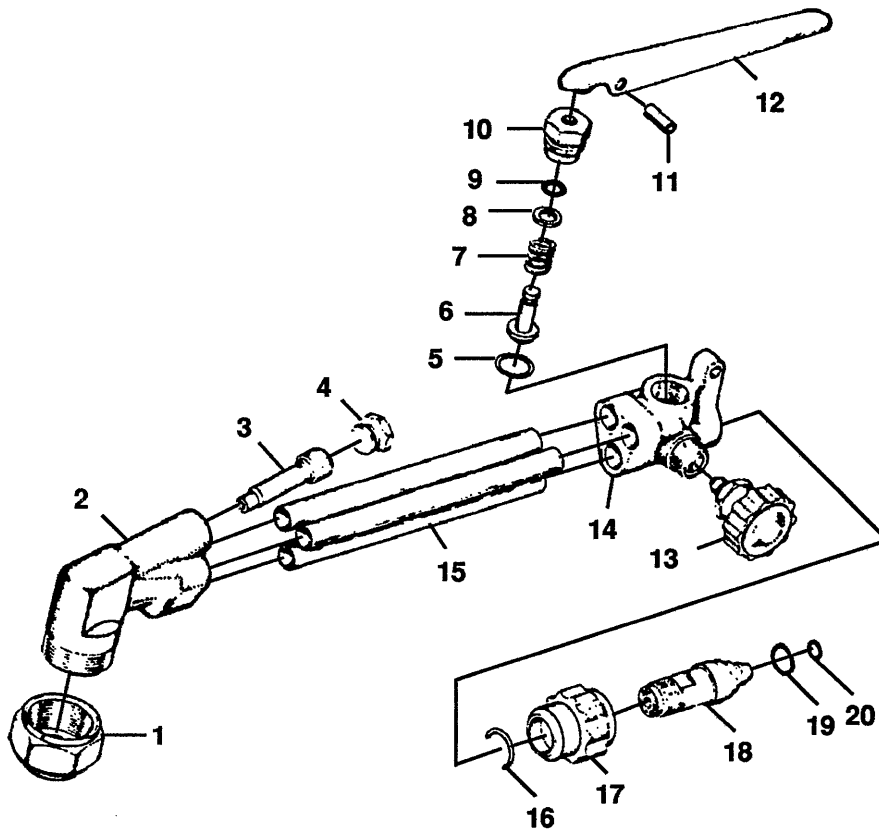
Detail A

REF. NO.	MFG. NO.	S-S NO.	DESCRIPTION	CODE	REF. NO.	MFG. NO.	S-S NO.	DESCRIPTION	CODE
	1700		Cutting Torch		12	CB-713		Spring	
1	TN2-1		Tip Nut		13	CB-714		Washer	
2	CB-717		Mixer Acetylene		14	RO-008N		O-Ring	
	CB-741		Mixer Propane		15	CB-715		Cutting Valve Nut	
3	CB-718-1		Mixer Cap Acetylene		16	RO-113N		O-Ring	
	CB-718-2		Mixer Cap Propane		17	CB-728		Guide Bushing	
4	DS-4		Drive Screw		18	CB-712		Cutting Valve Stem	
5	TS2-1		Valve Stem Sub-Assembly						
6	CB-133		Cutting Torch Sub-Assembly						
7	CV-8L	WE-466	Fuel Gas Check Valve						
8	CV-7R	WE-465	Oxygen Check Valve						
9	CB-723		Spring Pin						
10	CB-722		Cutting Lever						
11	CB-716		Guide Cup						

Western Enterprises

Model CB-531

Acetylene/Propane Torch



REF. NO.	MFG. NO.	S-S NO.	DESCRIPTION	CODE	REF. NO.	MFG. NO.	S-S NO.	DESCRIPTION	CODE
	CB-531		Acetylene/Propane		14	CB-502		Cutting Oxygen Valve Body	
1	TN2-2		Tip Nut		15	CB-519		St. Stl. Tubing (3)	
2	CB-503		Torch Head		16	CB-510		Retaining Ring	
3	CB-517		Torch Head Mixer		17	CB-509		Union Nut	
4	CB-518		Mixer Cap		18	CB-508		Union Nipple	
5	CB-516		Sealing Washer		19	CB-527		O-Ring	
6	CB-512		Valve Stem		20	CB-526		O-Ring	
7	CB-513		Valve Spring						
8	CB-514		Spring Retainer						
9	RO-008N		O-Ring						
10	CB-515		Valve Nut						
11	CB-523		Handle Retaining Pin						
12	CB-522		Handle						
13	TS2-2		Valve Stem Sub-Assembly						

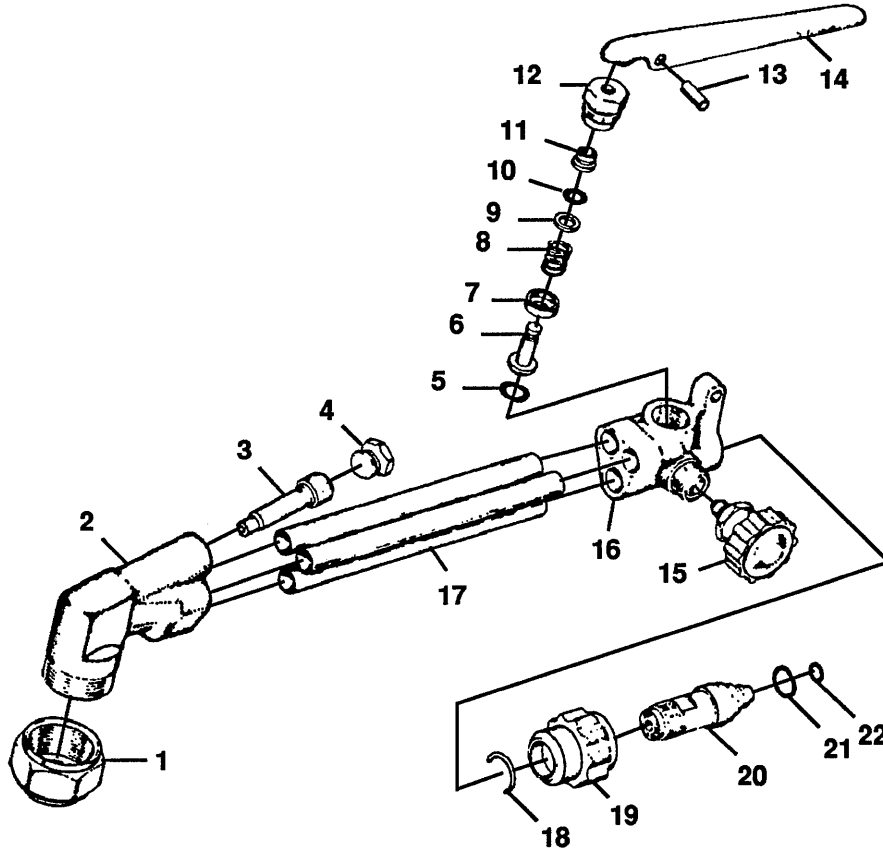


SEAL-SEAT

Western Enterprises

Model CB-731

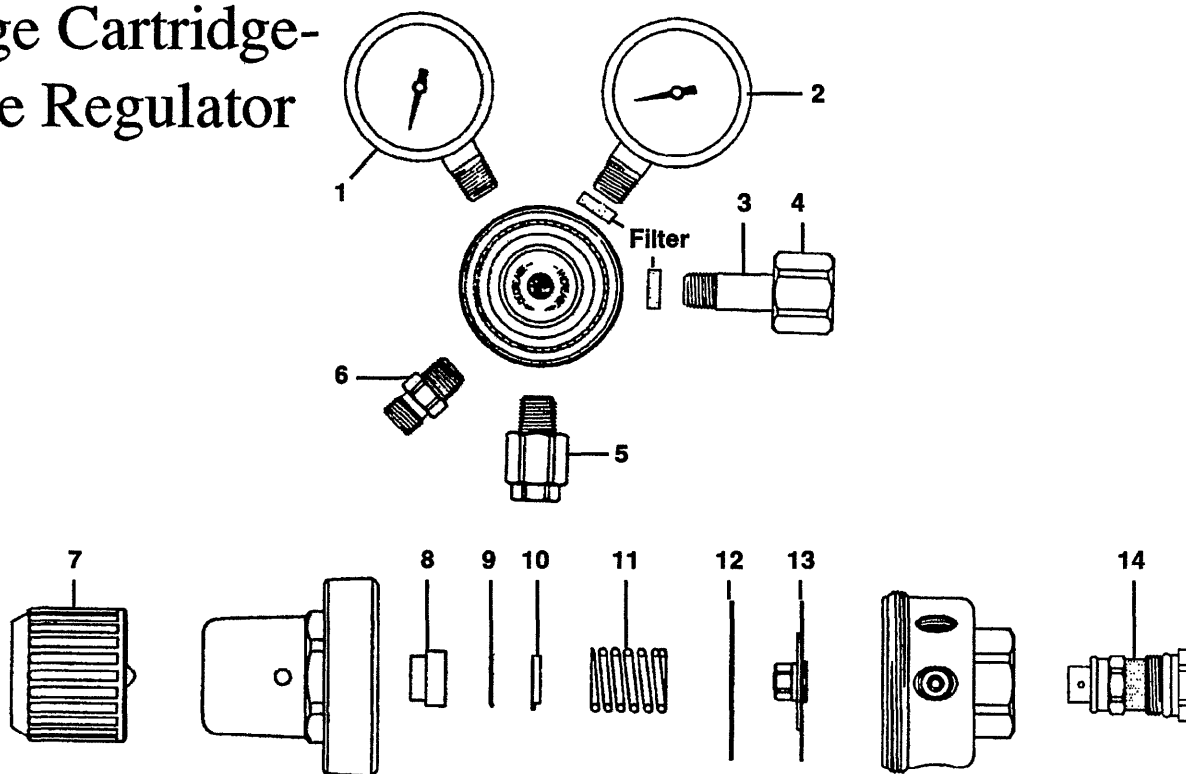
Acetylene/Propane Torch



REF. NO.	MFG. NO.	S-S NO.	DESCRIPTION	CODE	REF. NO.	MFG. NO.	S-S NO.	DESCRIPTION	CODE
	CB-731		Acetylene/Propane		12	CB-715		Cutting Valve Nut	
1	TN2-1		Tip Nut		13	CB-723		Spring Pin	
2	CB-703		Torch Head		14	CB-722		Cutting Lever	
3	CB-717		Mixer Acetylene		15	TS-2-1		Valve Stem Sub-Assembly	
4	CB-741		Mixer Propane		16	CB-702		Cutting Oxygen Valve Body	
4	CB-718-1		Mixer Cap Acetylene		17	CB-719		.375 O.D. St. Stl. Tube (3)	
	CB-718-2		Mixer Cap Propane		18	CB-710		Retaining Ring	
5	RO-113N		O-Ring		19	CB-709		Union Nut	
6	CB-712		Cutting Valve Stem		20	CB-708		Union Nipple	
7	CB-716		Guide Cup		21	CB-727		O-Ring	
8	CB-713		Cutting Valve Spring		22	CB-726		O-Ring	
9	CB-714		Washer						
10	RO-008N		O-Ring						
11	CB-728		Guide Bushing						

Western Enterprises

RC Series Accu-Trol Pressure Compensated Single-Stage Cartridge-Type Regulator



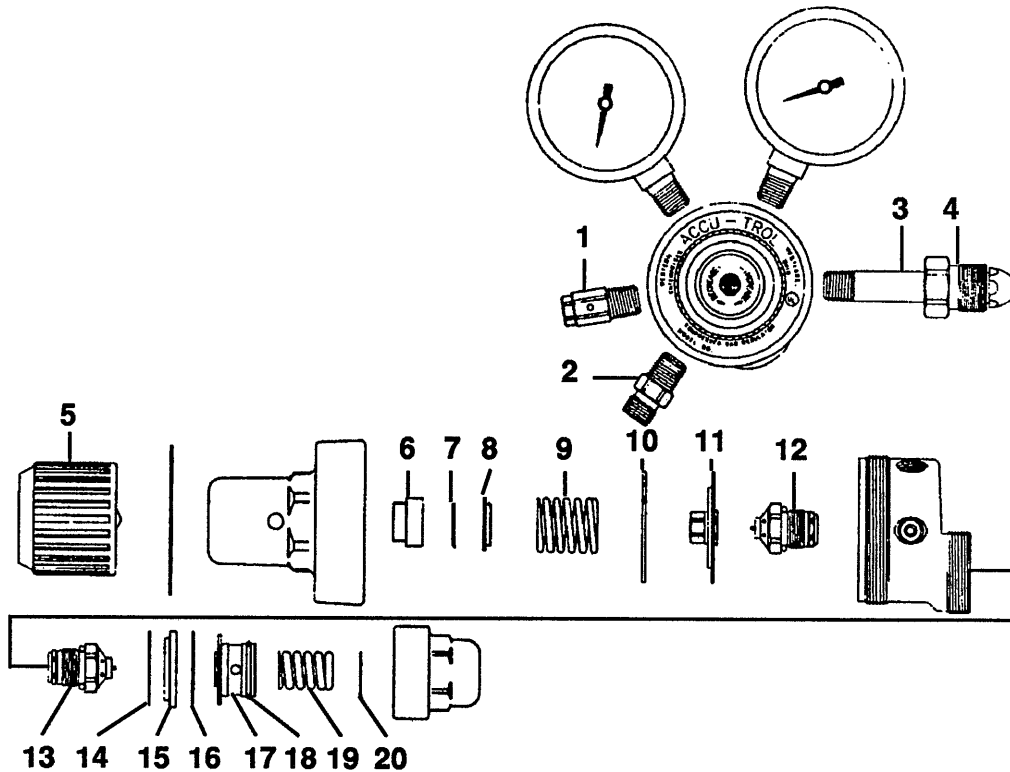
REF. NO.	MFG. NO.	S-S NO.	DESCRIPTION	CODE	REF. NO.	MFG. NO.	S-S NO.	DESCRIPTION	CODE
			Accu-Trol Pressure Compensated Single-Stage Cartridge-Type Regulator, RC Series						
	RC-1-1		Acetylene Pol	A	13-2			Hexagon Nut, CGA 326	
	RC-1A-1		Acetylene Comm.	B	14-2	WE-023		Hexagon Nut, CGA 346	C, D
	RC-3-3		Air	C	82	WE-150		Hexagon Nut, CGA 350	G, H
	RC-3-4		Air	D	15-2	WE-032		Hexagon Nut, CGA 510	A, N
	RC-4-3		Carbon Dioxide	E	62	WE-117		Hexagon Nut, CGA 540	L, M
	RC-5-3		Helium	F	92	WE-161		Hexagon Nut, CGA 580	F, J, K
	RC-6-3		Hydrogen	G	93	WE-162		Hexagon Nut, CGA 590	
	RC-6-4		Hydrogen	H	5	P-4		Safety Plug	N
	RC-7-3		Nitrogen CGA #580 (W.P.)	J	RWC-3-2			Safety Plug, 60 PSI	A thru N
	RC-7-4		Nitrogen CGA #580 (W.P.)	K	RWC-3-3			Safety Plug, 100 PSI	A thru N
	RC-9-3		Oxygen	L	RWC-3-4			Safety Plug, 200 PSI	A thru N
	RC-9-4		Oxygen	M	6	32	WE-090	Outlet Bushing, 9/16-18 RH	A thru N
	RC-10-2		Liquified Fuel Gas	N	33		WE-091	Outlet Bushing, 9/16-18 LH	A thru N
	1	G-25-30RL	Low Pressure Gauge	A, B	7	RWC-3-23		Handwheel Sub-Assembly	A, B, G, H, N
		G-25-200	Low Pressure Gauge	C thru M		RWC-3-24		Handwheel Sub-Assembly	L, M
		G-25-100	Low Pressure Gauge	N		RWC-3-25		Handwheel Sub-Assembly	C-F, J, K
	2	G-25-400	High Pressure Gauge	A, B	8	RWC-3-13		Bonnet Bushing	A thru N
		G-25-4000	High Pressure Gauge	C, D, F-M	9	RWC-3-14		Bushing Retainer	A thru N
		G-25-3000	High Pressure Gauge	E	10	RWC-2-8P		Pivot	A thru N
		G-25-400	High Pressure Gauge	N	11	RWC-1-3		Bonnet Spring, 0-15 PSI	
	3	16-8SF	Nipple with Filter, CGA-300	B		RWC-1-4		Bonnet Spring, 0-45 PSI	
		CO-4SF	Nipple with Filter, CGA-320	E		RWC-1-7		Bonnet Spring, 0-100 PSI	
		13-3SF	Nipple with Filter, CGA 326			RWC-1-8		Bonnet Spring, 0-160 PSI	
		14-3SF	Nipple with Filter, CGA 346	C, D	12	RWC-2-9		Slip Ring	A thru N
		87-SF	Nipple with Filter, CGA 350	G, H	13	RWC-3-29		Diaphragm Sub-Assembly	A thru N
		15-3SF	Nipple with Filter, CGA 510, 580, 590	A, F, J, K, N	14	RWC-3-49		Cartridge	C thru K
						RWC-3-57		Cartridge	L, M
						RWC-3-59		Cartridge	A, B, N
	4	66-SF	Nipple with Filter, CGA-540	L, M					
		16-2	Hexagon Nut, CGA-300	B					
		CO-2	Hexagon Nut, CGA 320	E					



SEAL-SEAT

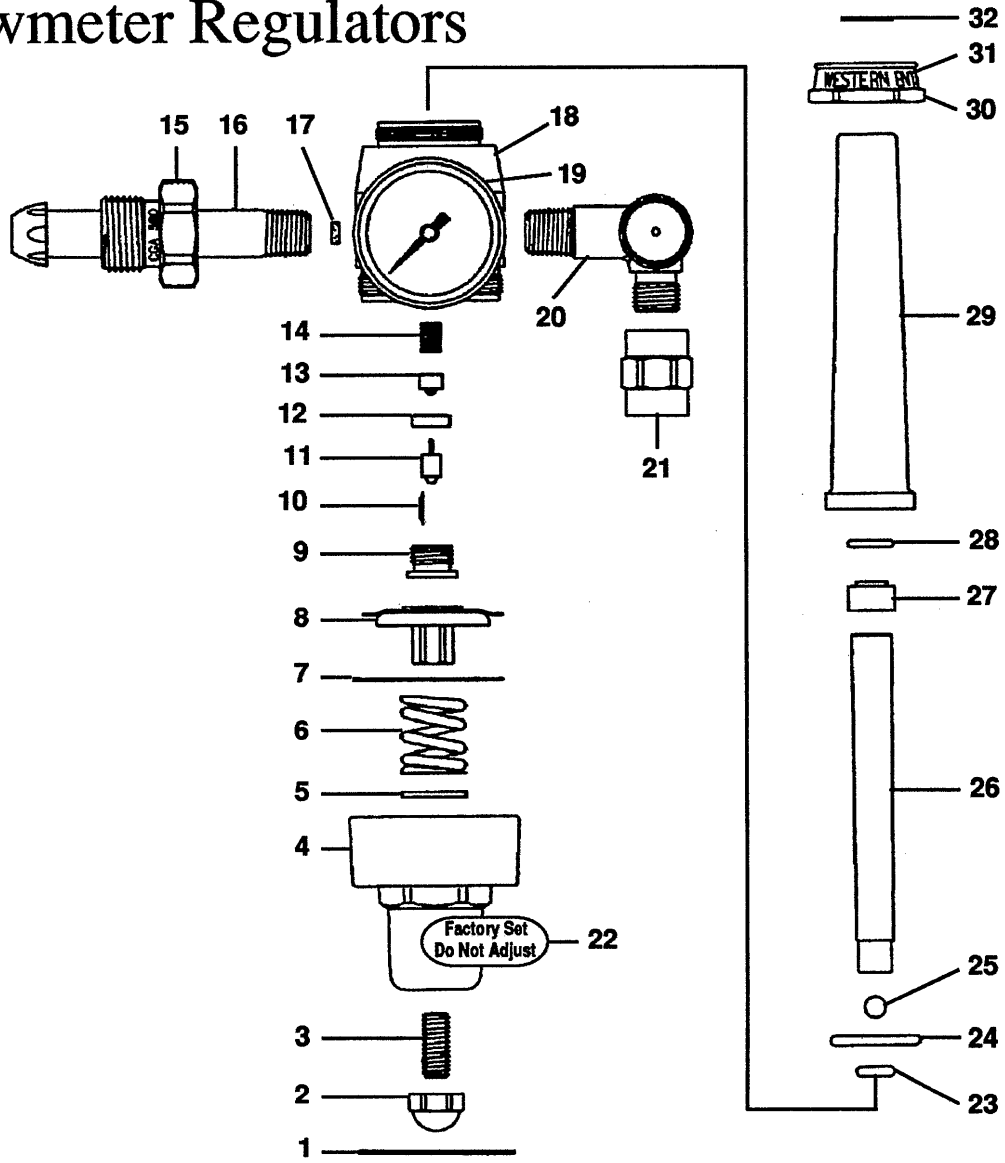
Western Enterprises

Series RD Accu-Trol Dual-Stage Regulator



REF. NO.	MFG. NO.	S-S NO.	DESCRIPTION	CODE	REF. NO.	MFG. NO.	S-S NO.	DESCRIPTION	CODE
			Accu-Trol Dual-Stage Reg., RD Series		15-2	WE-032		Hexagon Nut, CGA 510	A, N
	RD-1-1		Acetylene Pol	A	62	WE-117		Hexagon Nut, CGA 540	L, M
	RD-1A-1		Acetylene Comm.	B	92	WE-161		Hexagon Nut, CGA 580	F, J, K
	RD-3-3		Air	C	93	WE-162		Hexagon Nut, CGA 590	
	RD-3-4		Air	D	5	RWC-3-23		Handwheel Sub-Assembly	A, B, G, H, N
	RD-4-3		Carbon Dioxide	E		RWC-3-24		Handwheel Sub-Assembly	L, M
	RD-5-3		Helium	F		RWC-3-25		Handwheel Sub-Assembly	C-E, F, J, K
	RD-6-3		Hydrogen	G	6	RWC-3-13		Bonnet Bushing	A thru N
	RD-6-4		Hydrogen	H	7	RWC-3-14		Bushing Retainer	A thru N
	RD-7-3		Nitrogen CGA #580 (W.P.)	J	8	RWC-2-8P		Pivot	A thru N
	RD-7-4		Nitrogen CGA #580 (W.P.)	K	9	RWC-1-3		Bonnet Spring, 0-15 PSI	
	RD-9-3		Oxygen	L		RWC-1-4		Bonnet Spring, 0-45 PSI	
	RD-9-4		Oxygen	M		RWC-1-7		Bonnet Spring, 0-100 PSI	
	RD-10-2		Liquified Fuel Gas	N		RWC-1-8		Bonnet Spring, 0-160 PSI	
1	P-4HP		Safety Plug	N	10	RWC-2-9		Second Stage Slip Ring	A thru N
	RWC-3-2		Safety Plug, 60 PSI	A thru M	11	RWC-3-29		Second Stage Diaphragm Sub-Assembly	A thru N
	RWC-3-3		Safety Plug, 100 PSI	A thru M	12	RWD-2-18		Second Stage Cartridge	A-K, N
	RWC-3-4		Safety Plug, 200 PSI	A thru M		RWD-2-36		Second Stage Cartridge	L, M
2	32	WE-090	Outlet Bushing, 9/16-18 RH	A thru N	13	RWD-2-19		First Stage Cartridge	A thru N
	33	WE-091	Outlet Bushing, 9/16-18 LH	A thru N	14	RWD-2-23		Gasket	A thru N
3	16-8SF	WE-075	Nipple with Filter, CGA-300	B	15	RWD-2-21		Bushing	A thru N
	CO-4SF	WE-456	Nipple with Filter, CGA-320	E	16	RWD-2-22		First Stage Slip Ring	A thru N
	13-3SF		Nipple with Filter, CGA 326		17	RWD-2-26		First Stage Diaphragm Sub-Assembly	A thru N
	14-3SF		Nipple with Filter, CGA 346	C, D	18	RWD-2-27		O-Ring	A thru N
	87-SF		Nipple with Filter, CGA 350	G, H	19	RWD-1-7		First Stage Bonnet Spring	A thru N
	15-3SF	WE-035	Nipple with Filter, CGA 510, 580, 590	A, F, J, K, N	20	RWD-2-25		Slip Disc	A thru N
	66-SF	WE-131	Nipple with Filter, CGA-540	L, M	21	RK-1030		Repair Kit (Includes items 10-18 & 20)	A thru N
4	16-2	WE-060	Hexagon Nut, CGA-300	B				See Accessories List for gauges.	
	CO-2	WE-448	Hexagon Nut, CGA 320	E					
	13-2		Hexagon Nut, CGA 326						
	14-2	WE-023	Hexagon Nut, CGA 346	C, D					
	82	WE-150	Hexagon Nut, CGA 350	G, H					

Western Enterprises Models RF-3-P & RF-4-P Flowmeter Regulators

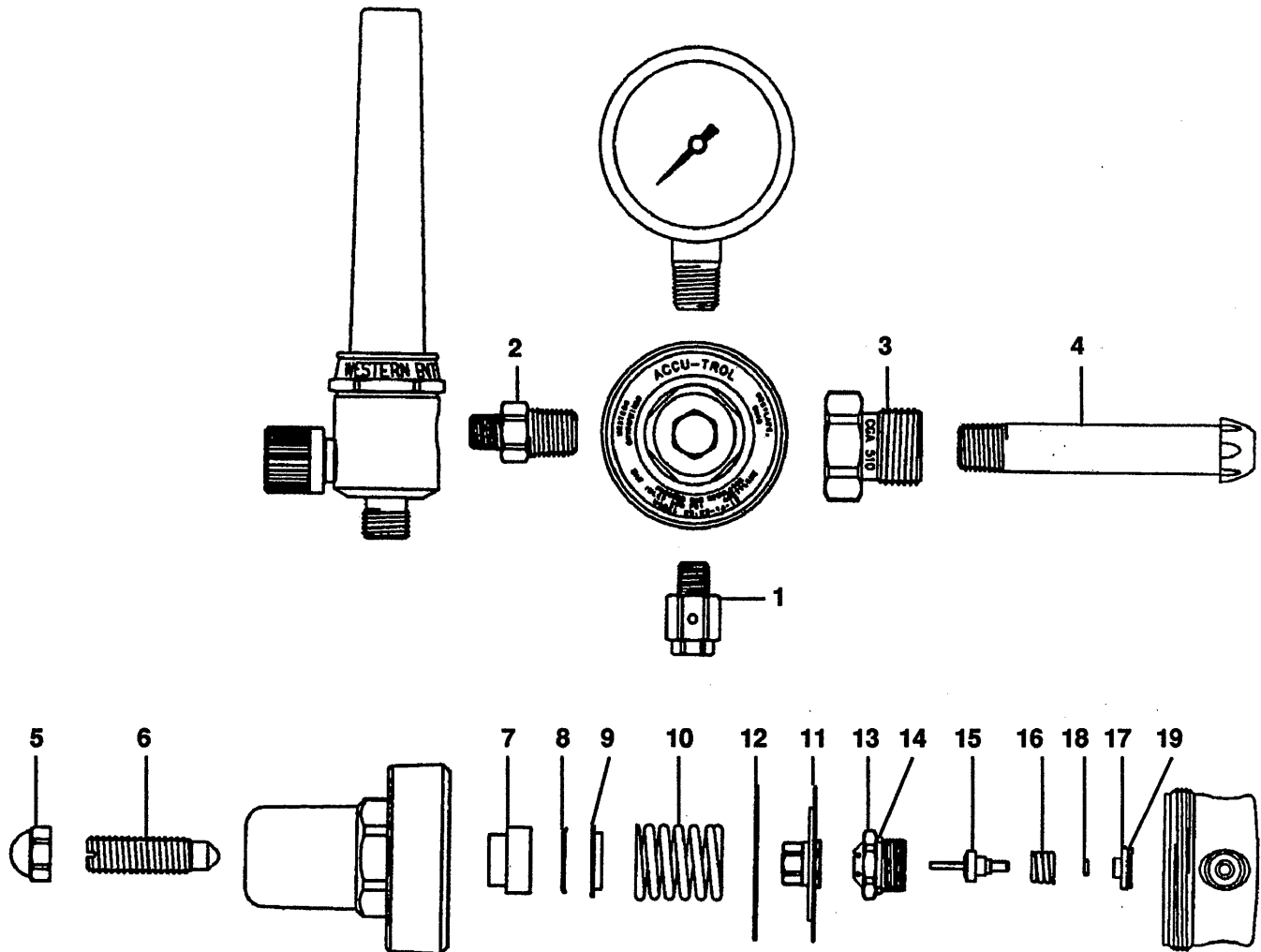


REF. NO.	MFG. NO.	S-S NO.	DESCRIPTION	CODE	REF. NO.	MFG. NO.	S-S NO.	DESCRIPTION	CODE
	RF-3-P		Flowmeter Regulator	A	16	15-4SF	WE-038	Inlet Nipple W/Filter	A
	RF-4-P		Flowmeter Regulator	B		CO-4SF	WE-456	Inlet Nipple W/Filter & Washer	B
1	RF-4PL		Nameplate	A	17	1134-3		Filter	A, B
	RF-3PL		Nameplate	B	18	2104-SP		Flowmeter Regulator Body	A, B
2	2124-1		Acorn Nut	A, B	19	G-18-4000		0-4000 PSI Gauge	A, B
3	2135		Seat Screw	A, B	20	21-NV-2		Needle Valve Sub-Assembly	A, B
4	1005-2		Bonnet	A, B	21	AW-432B		Adaptor	A, B
5	1027-1		Pivot	A, B	22	2130		Decal	A, B
6	1038		Spring	A, B	23	2033		O-Ring	A, B
7	1033		Slip Ring	A, B	24	2033-3		O-Ring	A, B
8	SU-10		Safety Valve Sub-Assembly	A, B	25	2002-1		Ball	A, B
9	1006-2		Bushing	A, B	26	20-T70		Flow Tube	A, B
10	1001		Anti-Vibrator	A, B	27	2013		Bumper Disc	A, B
11	10-P01	WE-011	Plunger Sub-Assembly	A, B	28	2033-4		O-Ring	A, B
12	10-T	WE-012	Seat Sub-Assembly	A, B	29	2010		Tube Cover	A, B
13	1043-2		Valve	A, B	30	2024-6		Flow Tube Nut	A, B
14	1038-1		Spring	A, B	31	2030		Decal	A, B
15	92	WE-161	Nut	A	32	2030-6		Decal	A, B
	CO-2	WE-448	Nut	B					

Western Enterprises

Series RFS

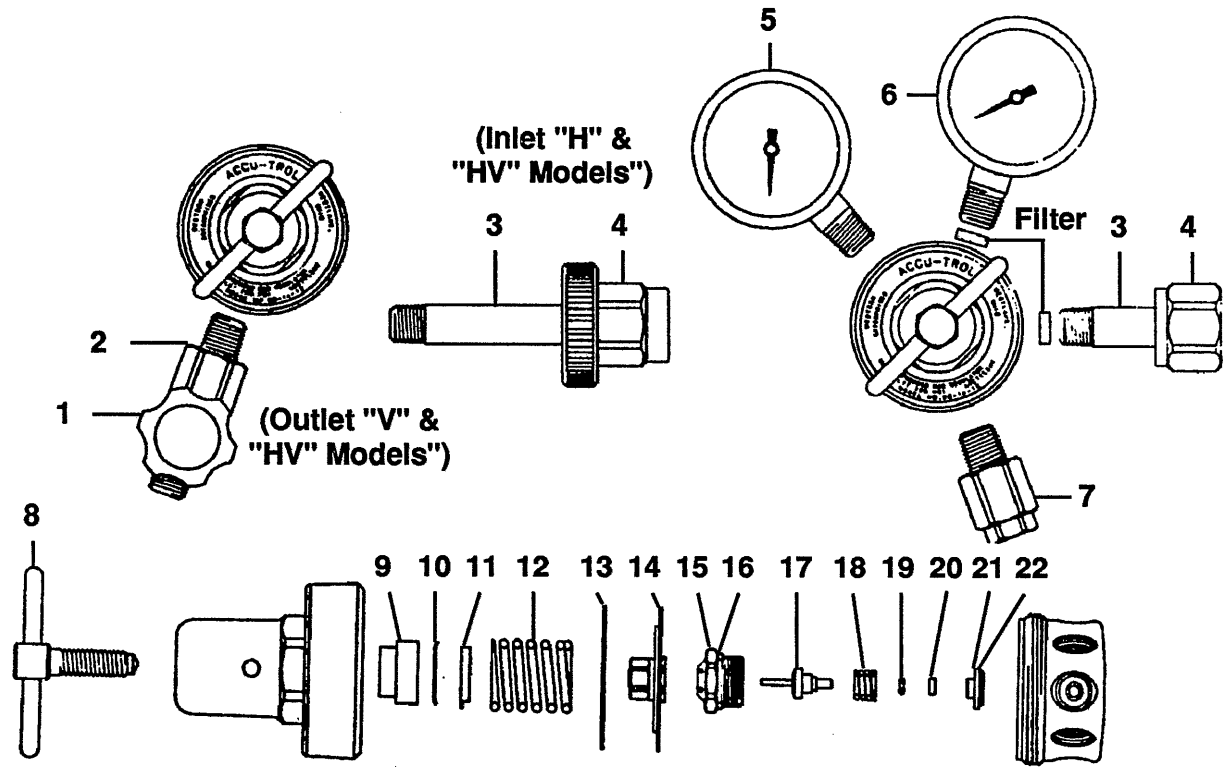
Flowmeter Regulator



REF. NO.	MFG. NO.	S-S NO.	DESCRIPTION	CODE	REF. NO.	MFG. NO.	S-S NO.	DESCRIPTION	CODE
	RFS-Series		Regulator		15	RWS-3-6	WE-616	Seat Holder & Stem	
1	RWC-3-4		Safety Relief Valve		16	RWS-1-8		Spring	
2	B-4-2HP	WE-378	Outlet Bushing		17	RWS-3-15		Compensating Spring Retainer	
3	CO-2	WE-448	Hexagon Nut (CGA-320)		18	RWS-3-13		O-Ring	
	82	WE-150	Hexagon Nut (CGA-350)		19	RWS-3-11		O-Ring	
	92	WE-161	Hexagon Nut (CGA-580)		20	RK-1010		Repair Kit (Includes Items 11 thru 19)	
4	CO-4SF	WE-456	Nipple with Filter (CGA-320)					See accessories list for flowmeter and pressure gauge information.	
	87-SF		Nipple with Filter (CGA-350)						
	15-3SF	WE-035	Nipple with Filter (CGA-580)						
5	RWS-3-1		Acorn Nut						
6	RWS-3-3		Pre-Set Adjusting Screw						
7	RWC-3-12		Bonnet Bushing						
8	RWC-3-14		Bushing Retainer						
9	RWC-2-8P		Pivot						
10	RWS-1-11		Bonnet Spring						
11	RWS-3-16	WE-619	Diaphragm Sub-Assembly						
12	RWS-3-17		Slip Ring						
13	RWS-3-18		Nozzle						
14	RWS-3-12		O-Ring						

Western Enterprises

Models RHP-X-3(H)(V) & RHP-X-4(H)(V) Regulators

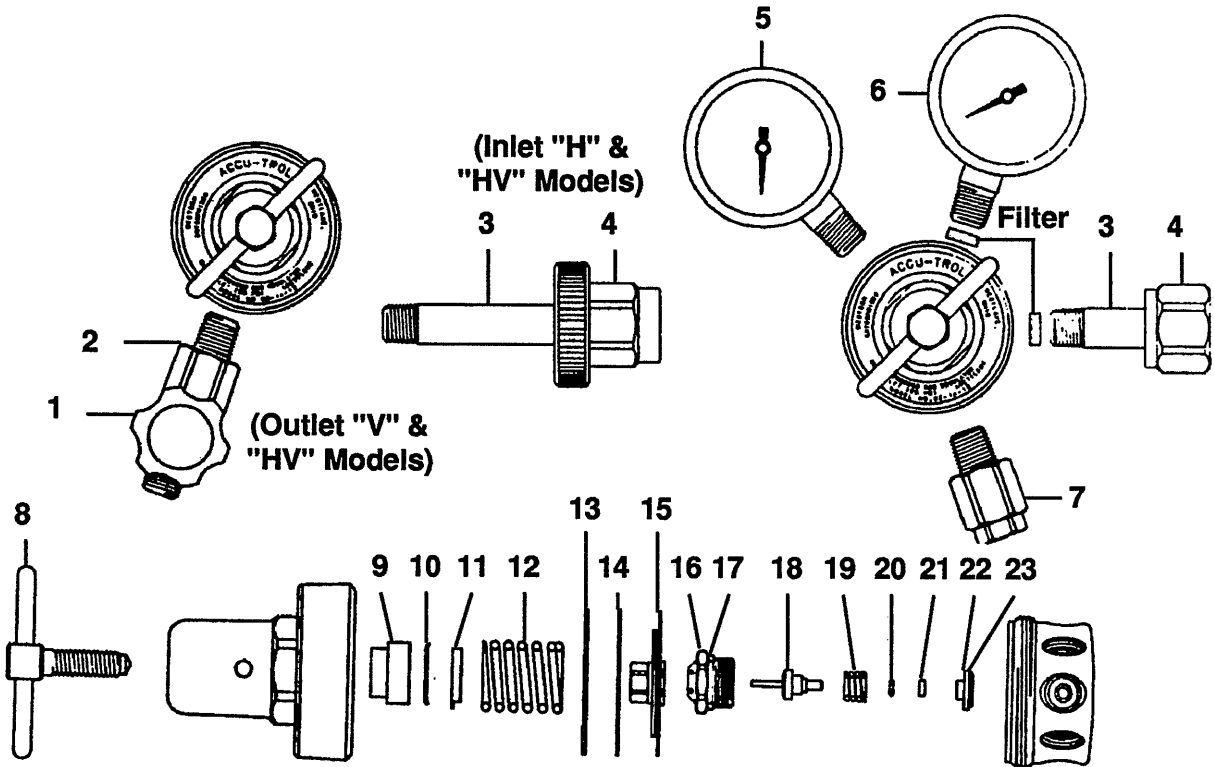


REF. NO.	MFG. NO.	S-S NO.	DESCRIPTION	CODE	REF. NO.	MFG. NO.	S-S NO.	DESCRIPTION	CODE
RHP-X-3(H)(V)			Regulator	A	8	RWS-3-21		Adjusting Screw	A, B
RHP-X-4(H)(V)			Regulator	B	9	RWC-3-12		Bonnet Bushing	A, B
1	211		Shut-Off Valve (For "V" or "HV" Suffix)	A, B	10	RWC-3-14		Bushing Retainer	A, B
2	BA-4HP	WE-377	Outlet Bushing (For "V" or "HV" Suffix)	A, B	11	RWC-2-8P		Pivot	A, B
3	SS-347-3SF		Nipple with Filter (CGA-347)		12	RWS-1-11		Bonnet Spring (0-80 PSI)	A, B
	SS-6347-3SF		Nipple with Filter (CGA-347 H/T)			RWS-1-12		Bonnet Spring (0-180 PSI)	A, B
	680-3SF		Nipple with Filter (CGA-680)		13	RWS-3-17		Slip Ring	A, B
4	SS-347-2		Hexagon Nut		14	RWS-3-16	WE-619	Diaphragm Sub-Assembly	A, B
	SS-6347-2		Hexagon Nut (CGA-347 H/T)		15	RWS-5-1		Nozzle	A, B
	680-2		Hexagon Nut (CGA-680)		16	RWS-3-12		O-Ring	A, B
5	G-2-200		Low Pressure Gauge (0-200 PSI)	A, B	17	RWS-5-3		Seat Holder & Stem	A, B
6	G-2-6000		High Pressure Gauge (0-6000 PSI)	A, B	18	RWS-1-17		Spring	A, B
7	RWC-3-4		Safety (200 PSI RHP-X-3)	A	19	RWS-3-13		O-Ring	A, B
	RWC-3-5		Safety (400 PSI RHP-X-4)	B	20	RWS-5-7		Back-Up Ring	A, B
					21	RWS-3-15		Compensating Spring Retainer	A, B
					22	RWS-3-11		O-Ring	A, B
					23	RK-1022		Repair Kit	A, B

Western Enterprises

Model RHP-X-5(H)(V)

Regulator

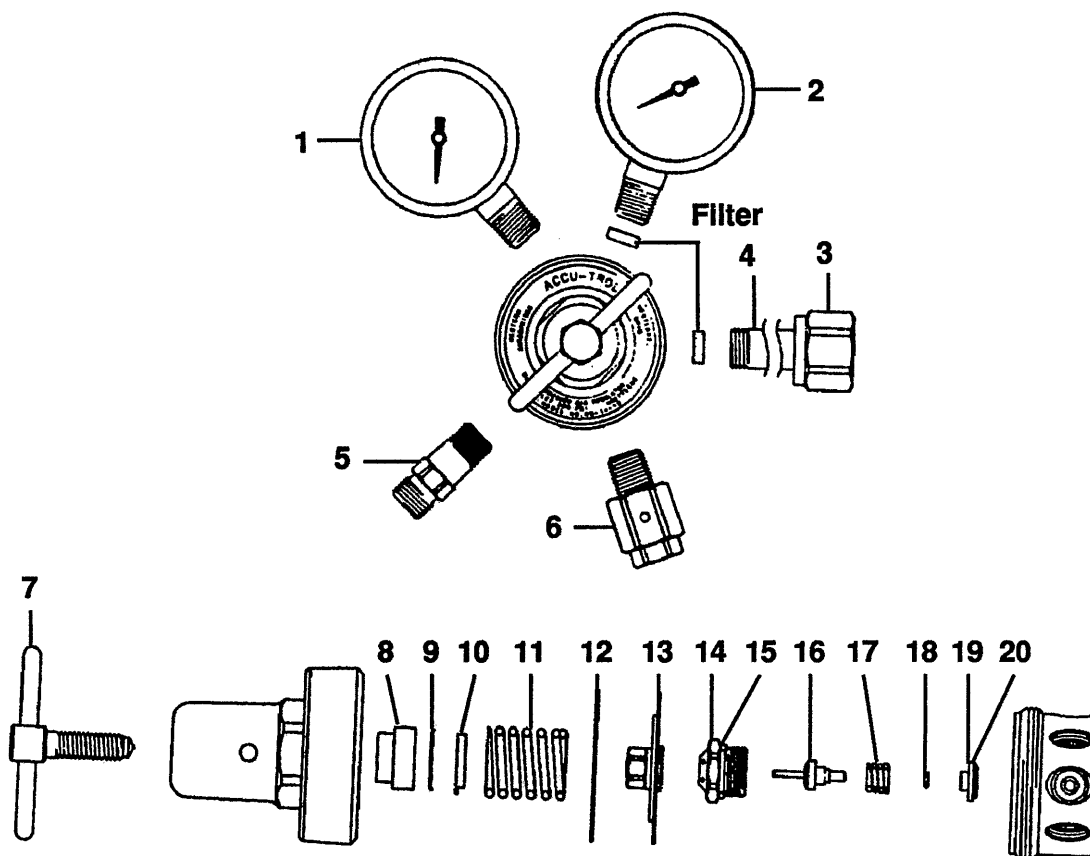


REF. NO.	MFG. NO.	S-S NO.	DESCRIPTION	CODE	REF. NO.	MFG. NO.	S-S NO.	DESCRIPTION	CODE
RHP-X-5 (H) (V)			Regulator		14	RWS-3-44		Slip Ring	
1	211	WE-377	Shut-Off Valve (For "V" or "HV" Suffix)		15	RWS-3-28		Diaphragm Sub-Assembly	
2	BA-4HP		Outlet Bushing		16	RWS-5-1		Nozzle	
3	SS-347-3SF SS-6347-3SF		Nipple with Filter (CGA-347)		17	RWS-3-12		O-Ring	
	680-3SF		Nipple with Filter (CGA-347 H/T)		18	RWS-5-3		Seat Holder & Stem	
4	SS-347-2 SS-6347-2		Nipple with Filter (CGA-680)		19	RWS-1-17		Spring	
	680-2		Hexagon Nut (CGA-347)		20	RWS-3-13		O-Ring	
5	G-2-600		Hexagon Nut (CGA-347 H/T)		21	RWS-5-7		Back-Up Ring	
6	G-2-6000		Hexagon Nut (CGA-680)		22	RWS-3-15		Compensating Spring	
7	RWS-X3		Low Pressure Gauge (0-600 PSI)		23	RWS-3-11		O-Ring	
8	RWS-3-21		High Pressure Gauge (0-6000 PSI)		24	RK-1022		Repair Kit	
9	RWC-3-12		Safety						
10	RWC-3-14		Adjusting Screw & Handle						
11	RWC-2-8P		Bonnet Bushing						
12	RWS-1-13		Bushing Retainer						
13	RWS-3-26		Pivot						
			Bonnet Spring						
			Back-Up Washer						

Western Enterprises

Models RHP-9-11 & RHP-9A-11

Regulators

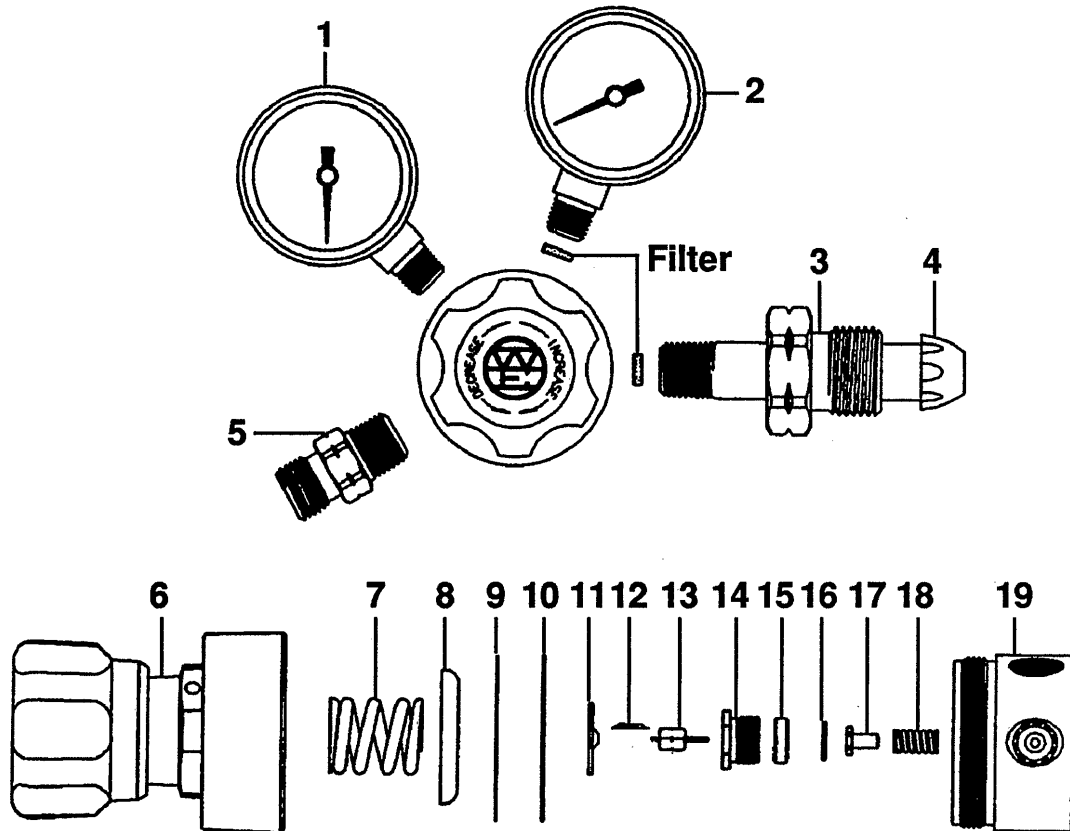


REF. NO.	MFG. NO.	S-S NO.	DESCRIPTION	CODE	REF. NO.	MFG. NO.	S-S NO.	DESCRIPTION	CODE
	RHP-9-11		Regulator		10	RWC-2-8P		Pivot	
	RHP-9A-11		Regulator		11	RWS-1-11		Bonnet Spring	
1	G-2-200		Low Pressure Gauge (0-200 PSI)		12	RWS-3-17		Slip Ring	
2	G-2-6000		High Pressure Gauge (0-6000 PSI)		13	RWS-3-16		Diaphragm Sub-Assembly	
3	62	WE-117	Hexagon Nut (CGA-540)		14	RWS-5-1		Nozzle	
	577-2		Hexagon Nut (CGA-577)		15	RWS-3-12		O-Ring	
4	66-SF	WE-131	Nipple with Filter (CGA-540)		16	RWS-5-3		Seat Holder & Stem	
	577-4SF		Nipple with Filter (CGA-577)		17	RWS-1-17		Spring	
5	CV-32R		Outlet Bushing with Check Valve		18	RWS-3-13		O-Ring	
6	RWC-3-4		Safety		19	RWS-3-15		Compensating Spring Retainer	
7	RWS-3-21		Adjusting Screw & Handle		20	RWS-3-17		O-Ring	
8	RWC-3-12		Bonnet Bushing		21	RK-1022		Repair Kit	
9	RWC-3-14		Bushing Retainer						

Western Enterprises

Model RSB-1-1

Regulator

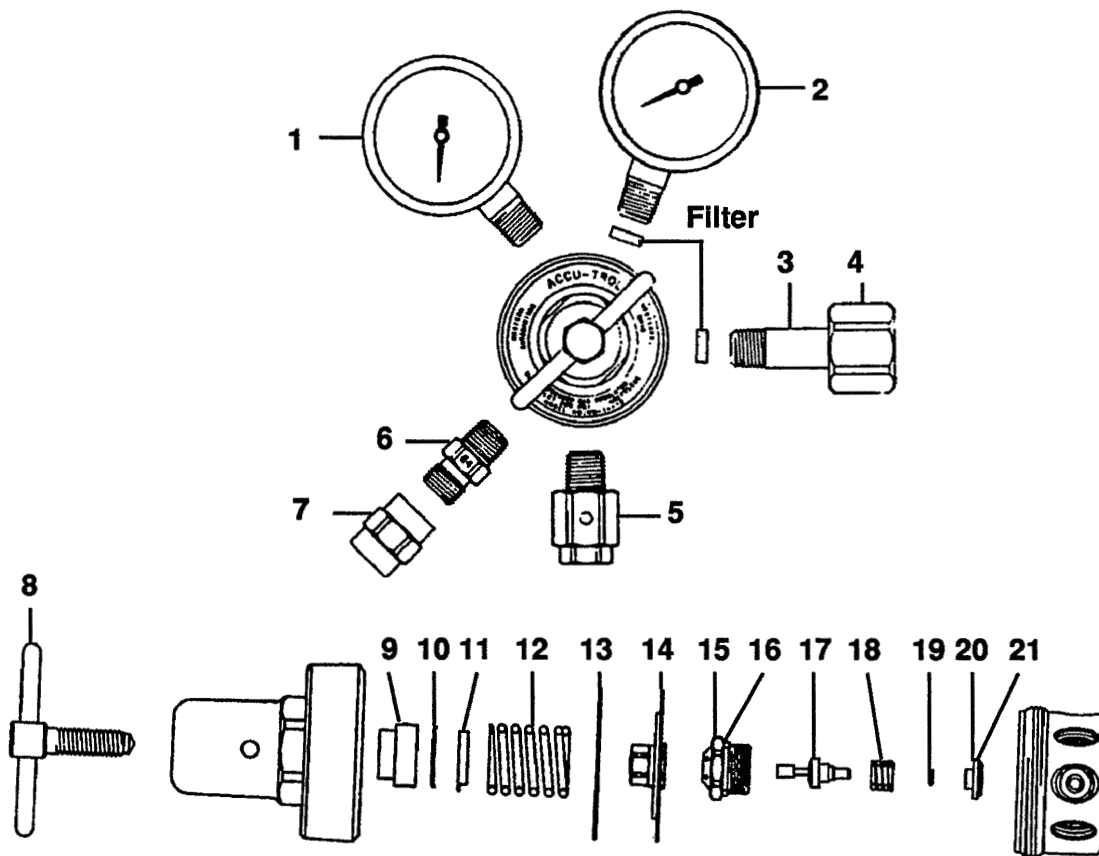


REF. NO.	MFG. NO.	S-S NO.	DESCRIPTION	CODE	REF. NO.	MFG. NO.	S-S NO.	DESCRIPTION	CODE
	RSB-1-1		Regulator		13	1131-2		Plunger	
1	G-15-30RL		Low Pressure Gauge		14	1006		Bushing	
2	G-15-400		High Pressure Gauge		15	1119-1		Seat Housing	
3	15-2	WE-032	CGA 580 Hex Nut		16	1136-1		Seat	
4	15-3SF	WE-035	CGA 580 Inlet Nipple		17	1143-1		Valve	
5	33	WE-091	Outlet Bushing		18	1038-1		Valve Spring	
6	11-AK14		Bonnet Sub-Assembly		19	1104-2		Regulator Body	
7	1138		Delivery Spring						
8	1012		Backup Disc						
9	1033		Slip Ring						
10	1011		Diaphragm						
11	1013		Plunger Disc						
12	1001		Anti-Vibrator						

Western Enterprises

Models RS-3-FG & RS-4-FG

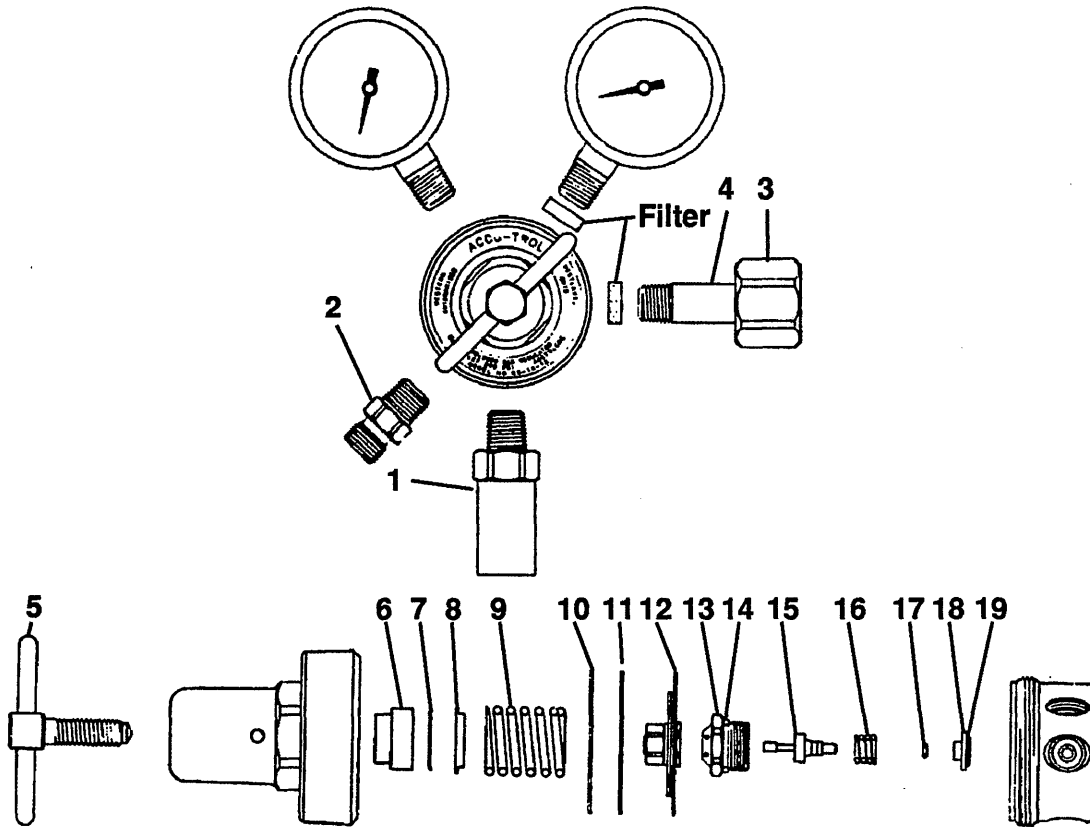
Regulators



REF. NO.	MFG. NO.	S-S NO.	DESCRIPTION	CODE	REF. NO.	MFG. NO.	S-S NO.	DESCRIPTION	CODE
	RS-3-FG		Regulator		15	RWS-3-18		Nozzle	
	RS-4-FG		Regulator		16	RWS-3-12		O-Ring	
1	G-2-F60		Flow Gauge		17	RWS-3-6	WE-616	Seat Holder & Stem	
2	G-2-4000		High Pressure Gauge		18	RWS-1-8		Spring	
3	CO-4SF	WE-456	Nipple with Filter (CGA-320)		19	RWS-3-13		O-Ring	
	15-3SF	WE-035	Nipple with Filter (CGA-510, 580, 590)		20	RWS-3-15		Compensating Spring Retainer	
4	CO-2	WE-448	Hexagon Nut (CGA-320)		21	RWS-3-11		O-Ring	
	92	WE-161	Hexagon Nut (CGA-580)		22	RK-1010		Repair Kit (Includes Items #10 thru #18)	
5	RWC-3-4		Safety						
6	32-64F		Outlet Bushing						
7	AW-432B		Adaptor						
8	RWS-3-21		Adjusting Screw & Handle						
9	RWC-3-12		Bonnet Bushing						
10	RWC-3-14		Bushing Retainer						
11	RWC-2-8P		Pivot						
12	RWS-1-11		Bonnet Spring						
13	RWS-3-17		Slip Ring						
14	RWS-3-16	WE-619	Diaphragm Sub-Assembly						

Western Enterprises

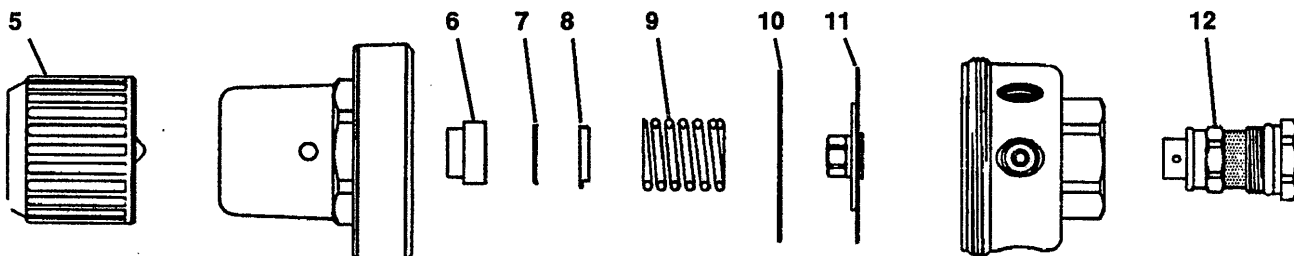
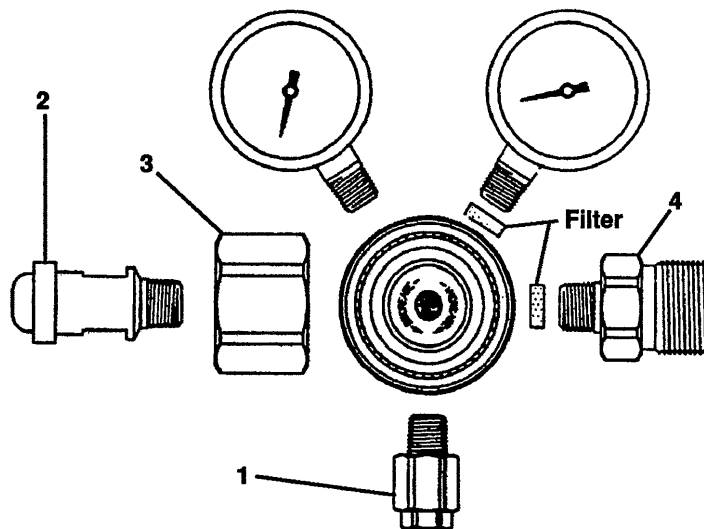
Series RS High Pressure Regulator



REF. NO.	MFG. NO.	S-S NO.	DESCRIPTION	CODE	REF. NO.	MFG. NO.	S-S NO.	DESCRIPTION	CODE
	RS		High Pressure Series Regulator		6	RWC-3-12		Bonnet Bushing	
1	RWS-X3		Safety		7	RWC-3-14		Bushing Retainer	
2	32	WE-090	Outlet Bushing (9/16 -18 RH)		8	RWC-2-8P		Pivot	
	33	WE-091	Outlet Bushing (9/16 -18 LH)		9	RWS-1-13		Bonnet Spring	
3	CO-2	WE-448	Hexagon Nut (CGA-320)		10	RWS-3-44		Slip Ring	
	13-2		Hexagon Nut (CGA-326)		11	RWS-3-26		Washer	
	14-2	WE-023	Hexagon Nut (CGA-346)		12	RWS-3-28		Diaphragm Sub-Assembly	
	82	WE-150	Hexagon Nut (CGA-350)		13	RWS-3-18		Nozzle	
	62	WE-117	Hexagon Nut (CGA-540)		14	RWS-3-12		O-Ring	
	92	WE-161	Hexagon Nut (CGA-580)		15	RWS-3-6	WE-616	Seat Holder & Stem	
	93	WE-162	Hexagon Nut (CGA-590)			RWS-3-25		Seat Holder & Stem (for O ₂ service)	
4	CO-4SF	WE-456	Nipple with Filter (CGA-320)		16	RWS-1-8		Spring	
	13-3SF		Nipple with Filter (CGA-326)		17	RWS-3-13		O-Ring	
	14-3SF		Nipple with Filter (CGA-346)		18	RWS-3-15		Compensating Spring	
	87-SF		Nipple with Filter (CGA-350)		19	RWS-3-11		O-Ring	
	66-SF	WE-131	Nipple with Filter (CGA-540)		20	RK-1020		Repair Kit (Includes Items 10 thru 19)	
	15-3SF	WE-035	Nipple with Filter (CGA-580,590)		21	RK-1021		Repair Kit (for Oxygen service)	
5	RWS-3-21		Adjusting Screw & Handle					See Accessories List for gauges.	

Western Enterprises

RM Series Regulator



REF. NO.	MFG. NO.	S-S NO.	DESCRIPTION	CODE	REF. NO.	MFG. NO.	S-S NO.	DESCRIPTION	CODE
1	RM-Series P-4HP		Regulator Safety Plug (Use P-4HP for fuel gas (Except H ₂), RWC-3-4 for all other standard Western regulators)		RWC-1-8			Bonnet Spring (0-160 PSI)	
	RWC-3-2		Safety Plug (60 PSI)		10	RWC-2-9		Slip Ring	
	RWC-3-3		Safety Plug (100 PSI)		11	RWC-3-29		Diaphragm Sub-Assembly	
	RWC-3-4		Safety Plug (200 PSI)		12	RWC-3-49		Cartridge for inert gases	
2	WHF-3-36		Nipple		RWC-3-57			Cartridge for oxygen	
3	WHF-3-29		Hexagon Nut (1-11 1/2 RH)		RWC-3-59			Cartridge for acetylene & LPG gases	
	WHF-3-30		Hexagon Nut (1-11 1/2 LH)					Cartridge Replacement Parts	
4	WMS-1-44 RH		Inlet with Filter		RWC-3-34			Nozzle	
	WMS-1-45 LH		Inlet with Filter		RWC-3-58			Nozzle for Acetylene & LPG Gases Use	
5	RWC-3-23		Handwheel Sub-Assembly (CGA-300, 350, 510)		RWC-3-48			Seat Holder Assembly	
	RWC-3-24		Handwheel Sub-Assembly (CGA-540)		RWC-3-37			O-Ring	
	RWC-3-25		Handwheel Sub-Assembly (CGA-320, 326, 346, 580, 590)		RWC-1-2			Spring	
6	RWC-3-13		Bonnet Bushing		RWC-3-35			Filter	
7	RWC-3-14		Bushing Retainer		RWC-3-42			Gasket	
8	RWC-2-8P		Pivot		RWC-3-38			O-Ring	
9	RWC-1-3		Bonnet Spring (0-15 PSI)		RWC-3-40			Back-Up Ring	
	RWC-1-4		Bonnet Spring (0-45 PSI)		RWC-3-41			Spring Retainer	
	RWC-1-7		Bonnet Spring (0-100 PSI)		RWC-3-36			O-Ring	
					RWC-3-51			Back-Up Ring	
					RWC-3-26			Body	
					*			See Accessories List for gauges.	

**SEAL-SEAT**

Western Enterprises

Accessories List

Accu-Trol Pressure Compensated Single-Stage Cartridge-Type Regulators RC Series

Item No.	Service Gas	Low Pressure Gauge	High Pressure Gauge
RC-1-1	Acetylene Pol	G-25-30RL	G-25-400
RC-1A-1	Acetylene Comm.	G-25-30RL	G-25-400
RC-3-3	Air	G-25-200	G-25-4000
RC-3-4	Air	G-25-200	G-25-4000
RC-4-3	Carbon Dioxide	G-25-200	G-25-3000
RC-5-3	Helium	G-25-200	G-25-4000
RC-6-3	Hydrogen	G-25-200	G-25-4000
RC-6-4	Hydrogen	G-25-200	G-25-4000
RC-7-3	Nitrogen CGA #580 (W.P.)	G-25-200	G-25-4000
RC-7-4	Nitrogen CGA #580 (W.P.)	G-25-200	G-25-4000
RC-9-3	Oxygen	G-25-200	G-25-4000
RC-9-4	Oxygen	G-25-200	G-25-4000
RC-10-2	Liquified Fuel Gas	G-25-100	G-25-400

Western Enterprises

Accessories List

Accu-Trol Dual-Stage Regulators RD Series

Item No.	Service Gas	Low Pressure Gauge	High Pressure Gauge
RD-1-1	Acetylene Pol	G-25-30RL	G-25-400
RD-1A-1	Acetylene Comm.	G-25-30RL	G-25-400
RD-3-3	Air	G-25-200	G-25-4000
RD-3-4	Air	G-25-200	G-25-4000
RD-4-3	Carbon Dioxide	G-25-200	G-25-3000
RD-5-3	Helium	G-25-200	G-25-4000
RD-6-3	Hydrogen	G-25-200	G-25-4000
RD-6-4	Hydrogen	G-25-200	G-25-4000
RD-7-3	Nitrogen CGA #580 (W.P.)	G-25-200	G-25-4000
RD-7-4	Nitrogen CGA #580 (W.P.)	G-25-200	G-25-4000
RD-9-3	Oxygen	G-25-200	G-25-4000
RD-9-4	Oxygen	G-25-200	G-25-4000
RD-10-2	Liquified Fuel Gas	G-25-100	G-25-400



Western Enterprises

Accessories List

Regulator Flowmeter Combinations RFS Series

Item No.	Service Gas	Flow Range	High Pressure Gauge
RFS-3-P	Argon	0-70 SCFH	G-2-4000
RFS-4-P	Carbon Dioxide	0-70 SCFH	G-2-3000
RFS-5-P	Helium	0-90 SCFH	G-2-4000
RFS-6-P	Hydrogen	0-100 SCFH	G-2-4000
RFS-7-P	Nitrogen	0-100 SCFH	G-2-4000

Accu-Trol Pressure Compensated Single-Stage Medium Duty Regulators RS Series

Item No.	Service Gas	Low Pressure Gauge	High Pressure Gauge
RS-1-1	Acetylene Pol	G-2-30RL	G-2-400
RS-1A-1	Acetylene Comm.	G-2-30RL	G-2-400
RS-4-3	Carbon Dioxide	G-2-200	G-2-3000
RS-5-5	Helium	G-2-600	G-2-4000
RS-6-3	Hydrogen	G-2-200	G-2-4000
RS-6-4	Hydrogen	G-2-200	G-2-4000
RS-7-3	Nitrogen CGA #580 (W.P.)	G-2-200	G-2-4000
RS-7-4	Nitrogen CGA #580 (W.P.)	G-2-200	G-2-4000
RS-7-5	Nitrogen CGA #580 (W.P.)	G-2-600	G-2-4000
RS-8-3	Nitrous Oxide	G-2-200	G-2-3000
RS-9-3	Oxygen	G-2-200	G-2-4000
RS-9-4	Oxygen	G-2-200	G-2-4000
RS-10-2	Liquified Fuel Gas	G-2-100	G-2-400